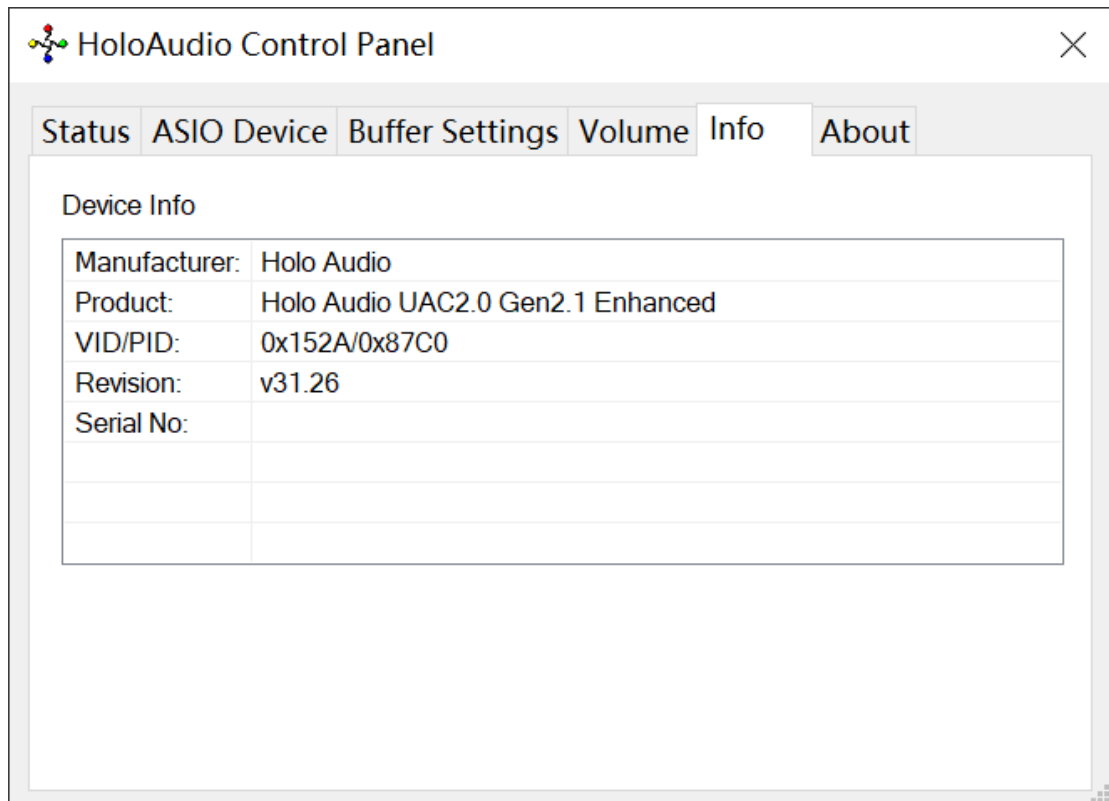


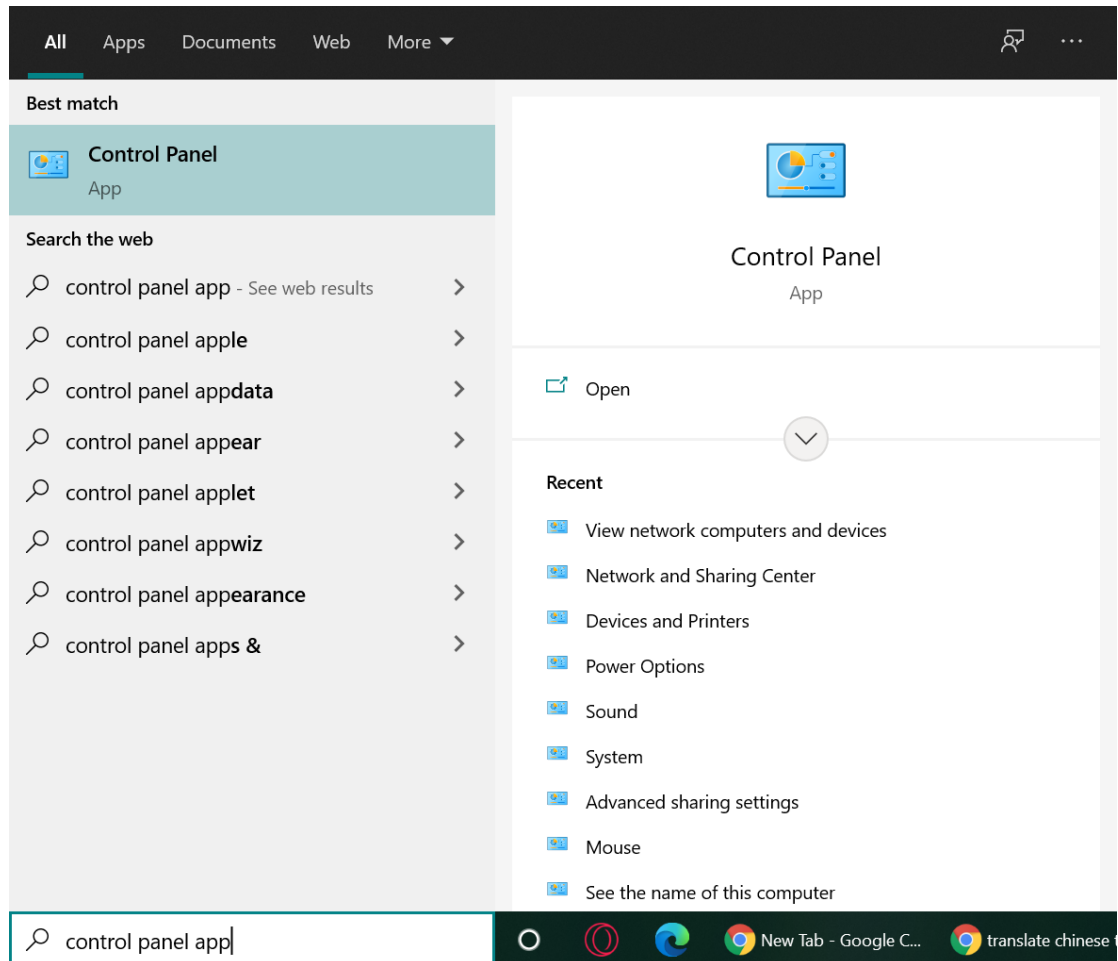
USB Firmware Update Guide

This update tool can only be used on "Holo Audio UAC2.0 Gen2.1" devices. Please do not use this tool on other equipment.

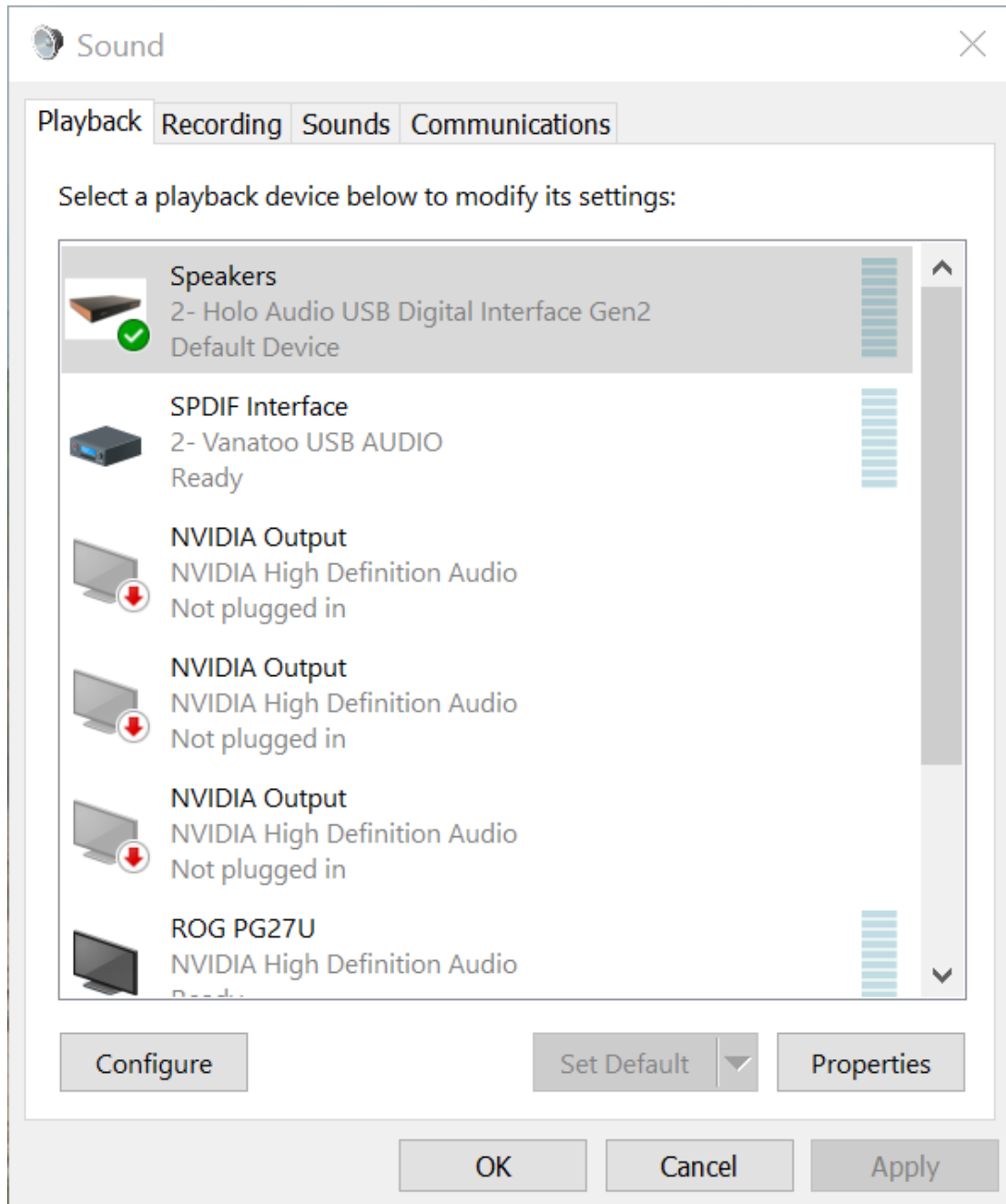
1. Follow the USB driver. When the driver is installed, open the 'HoloAudio Control Panel'. Check if the current device is 'Holo Audio UAC2.0 Gen2.1 Standard' or 'Holo Audio UAC2.0 Gen2.1 Enhanced'



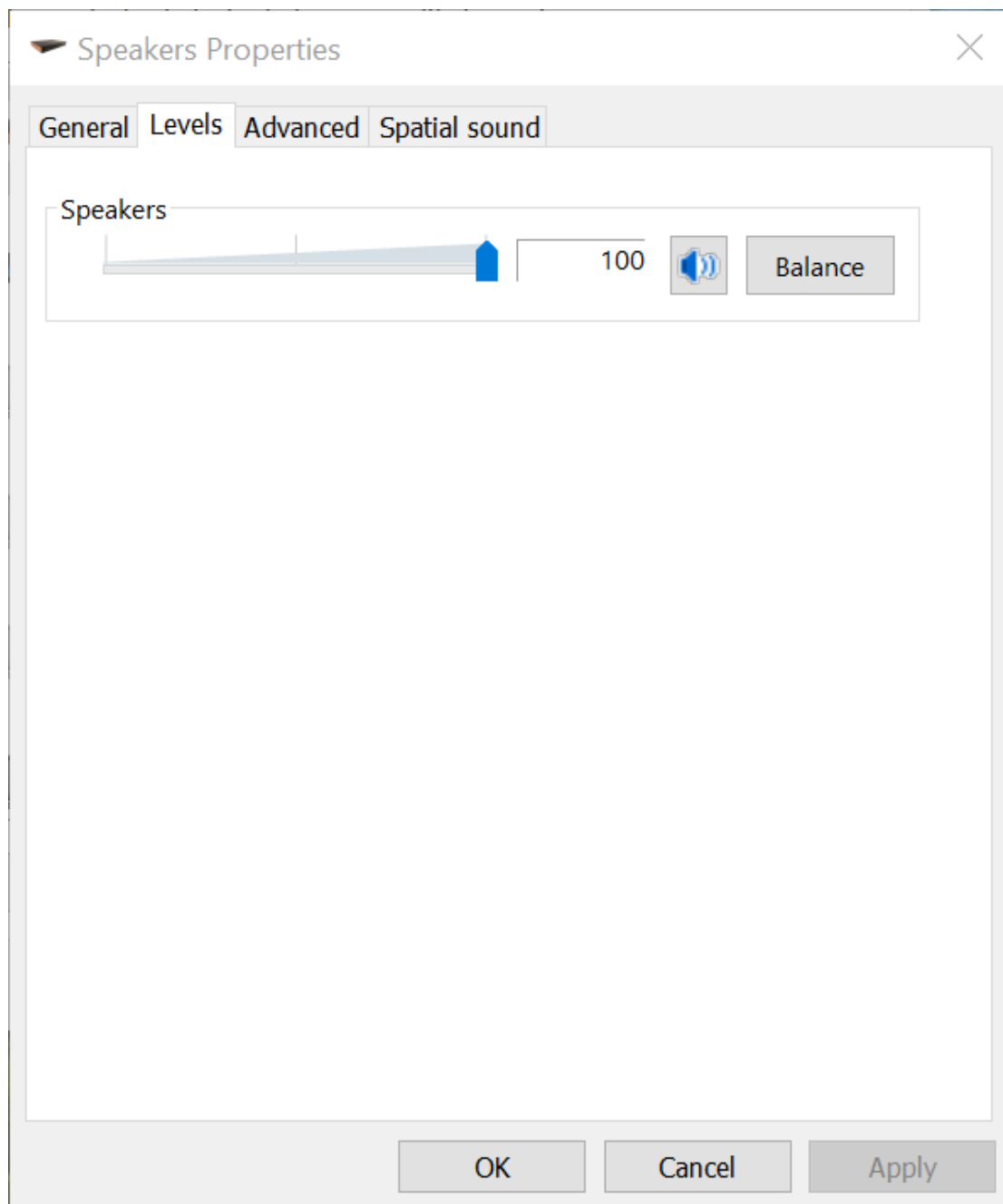
1. Enter 'Control Panel' in the Windows search bar at the bottom left corner of the screen, and then open the 'Control Panel' in the search results above



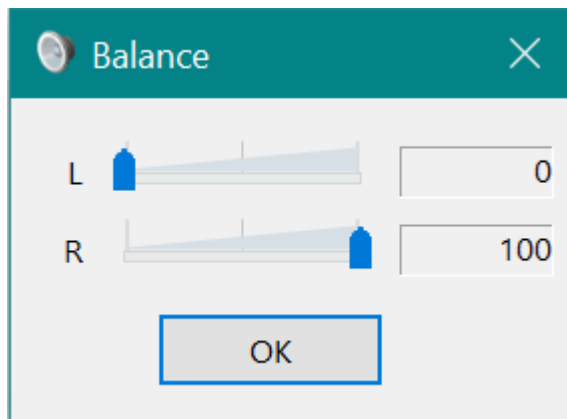
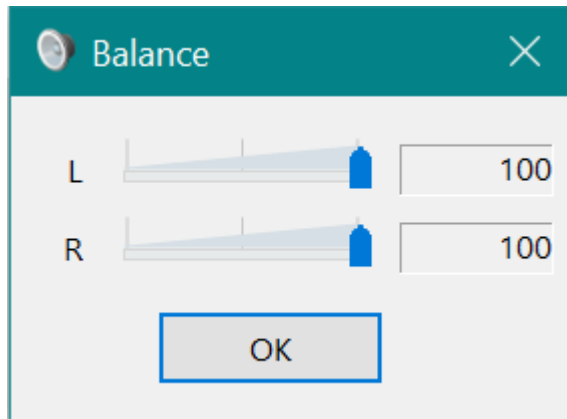
1. After clicking 'Hardware and Sound', find 'Manage Audio Devices' and open it, select 'Holo Audio USB Digital Interface Gen2' and click on 'Properties'



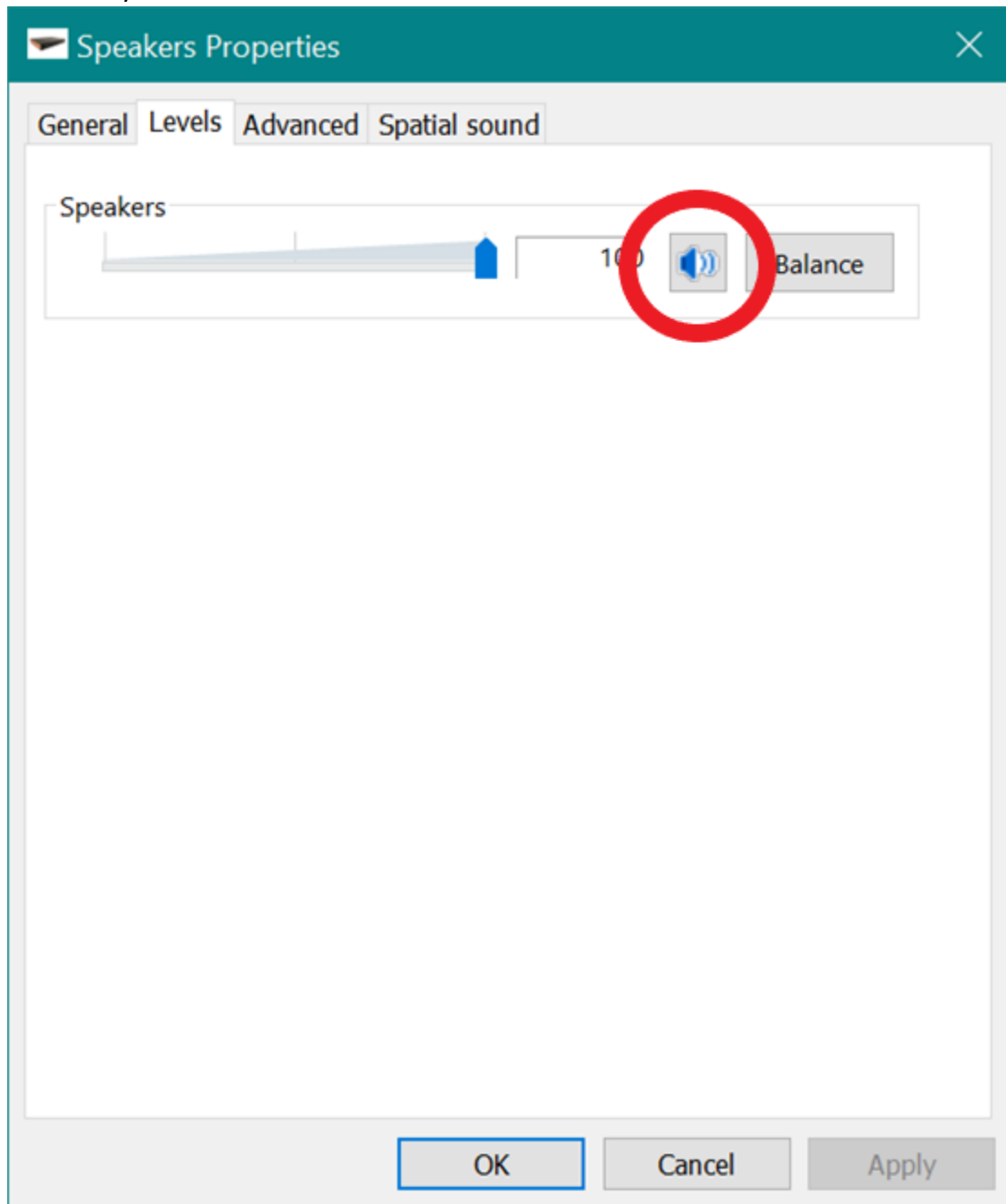
1. After entering the 'level' option, click on 'balance'



1. Turn the volume on the front left to 0 and the volume on the front right to 100, and then confirm to exit. Note that if the front right volume is originally 100, it needs to be adjusted to less than 100 and then to 100. If the front left volume is 0, it also needs to be adjusted to greater than 0 and then to 0

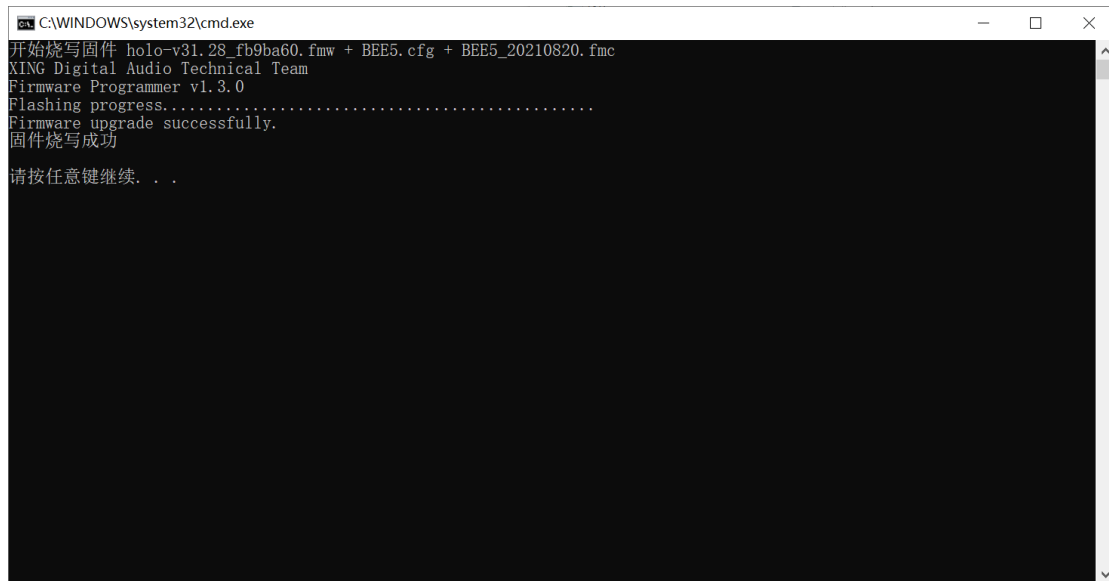


1. Quickly click the mute button 20 times, or press and hold the 'm' key on the keyboard



1. You will see the device disappear, indicating that you have entered the configuration mode

1. Open the downloaded firmware update package, click _Start_Upgrade_Firmware.bat , and then press any key to exit after it prompts that the firmware is successfully updated the USB 2.1 Module.



```
C:\WINDOWS\system32\cmd.exe
开始烧写固件 holo-v31.28_fb9ba60.fmw + BEE5.cfg + BEE5_20210820.fmc
XING Digital Audio Technical Team
Firmware Programmer v1.3.0
Flashing progress.....
Firmware upgrade successfully.
固件烧写成功
请按任意键继续. . .
```

1. After the firmware update is complete, unplug the USB plug and plug it in again to return to normal use mode